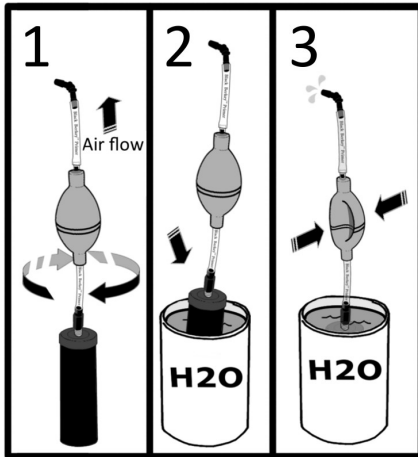


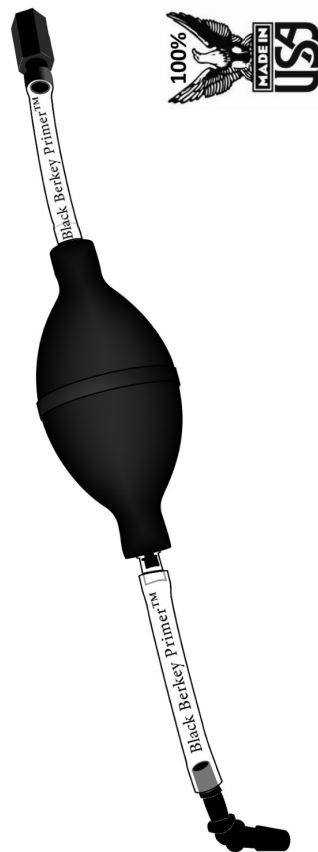
To prime the Black Berkey™ Element:



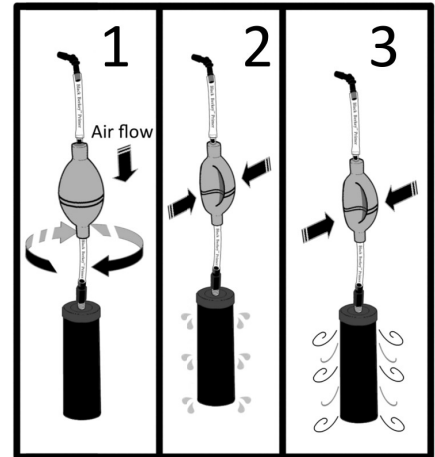
1. Attach pump to element.
2. Immerse element into water source.
3. Squeeze pump, allow it to expand, & repeat until water flows from other end.

*If attached properly, air will exit the opposite end upon squeezing the pump. If not, switch attachments.*

## Black Berkey Primer™



To purge the Black Berkey™ Element:



1. Attach pump to element.
2. Squeeze pump, allow it to expand, & repeat until desired, or
3. Until element is dry to touch.

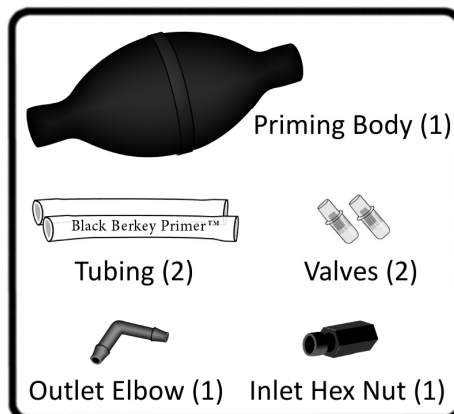
*If attached properly, air/water will exit the carbon body of the Black Berkey™ Element upon squeezing the pump. If not, remove black attachments from tubing & switch sides.*

### Care of the Black Berkey Primer™:

- Rinse components after use and allow each to air dry before re-assembly and storage.
- Store in a cool/dry location, closed container, and avoid exposure to extreme temperatures.
- This product contains small parts and presents a choking hazard. Keep out of reach of children.
- Exposure to direct sunlight (UV) will decrease product lifespan.

**Whenever processing water for human consumption, wash hands & secure a clean workspace.**

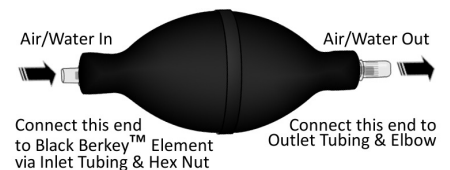
### Parts & Assembly



The Black Berkey Primer™ allows users of Berkey® systems to do two things:

1. **Prime the Black Berkey™ Elements** saturate the elements with water to prepare them for immediate use, and
2. **Purge the Black Berkey™ Elements** - use air to clear contaminants from the micro-pores of the proprietary carbon block, thereby extending its lifespan, improving the flow of water, and saving time on drying prior to storage.

### Priming Setup

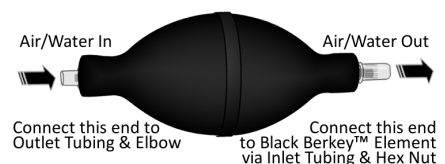


Connect this end to Black Berkey™ Element via Inlet Tubing & Hex Nut

Connect this end to Outlet Tubing & Elbow

By paying attention to the direction of the valves, changing functions is as easy as switching sides of the Elbow & the Hex Nut.

### Purging Setup



Connect this end to Outlet Tubing & Elbow

Connect this end to Black Berkey™ Element via Inlet Tubing & Hex Nut

Download free copies of these instructions:

**BerkeyWater.com**

*Berkey® is a trademark of New Millennium Concepts, Ltd.*